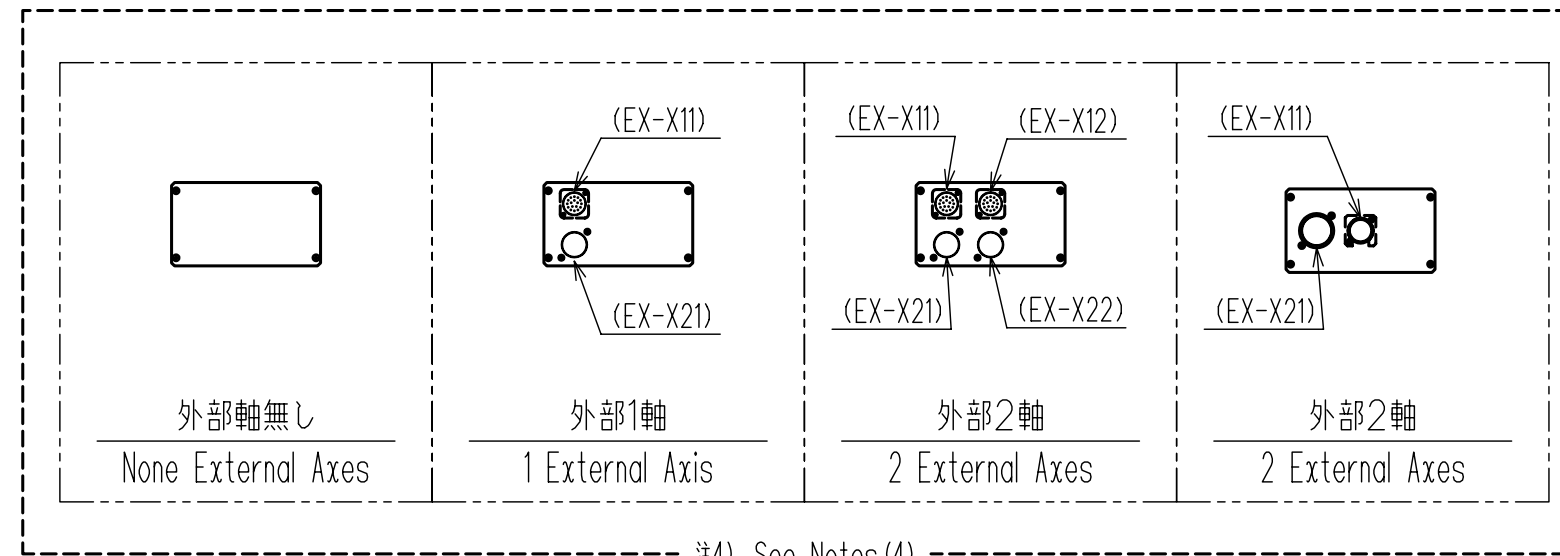


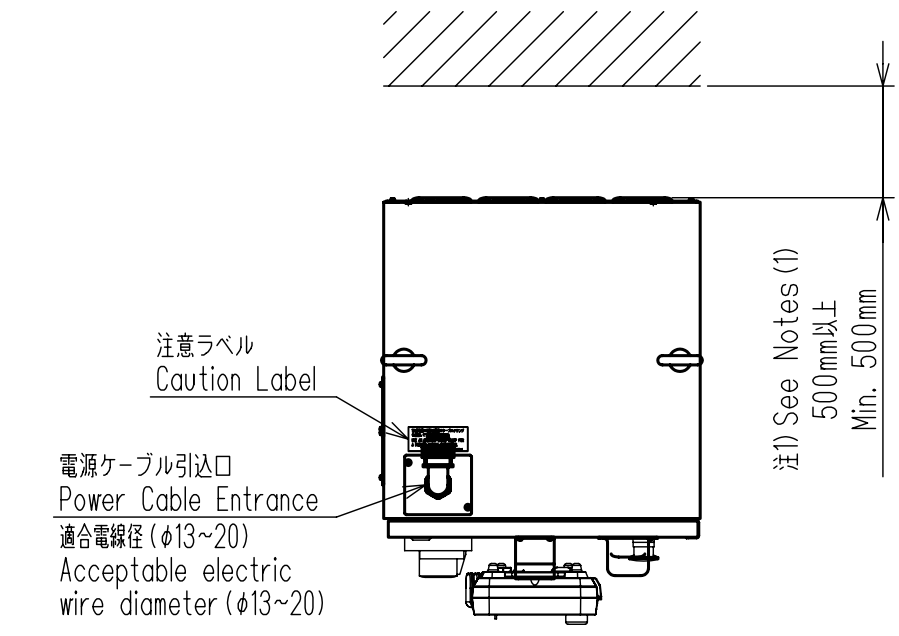
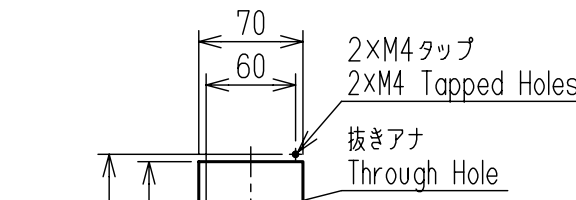
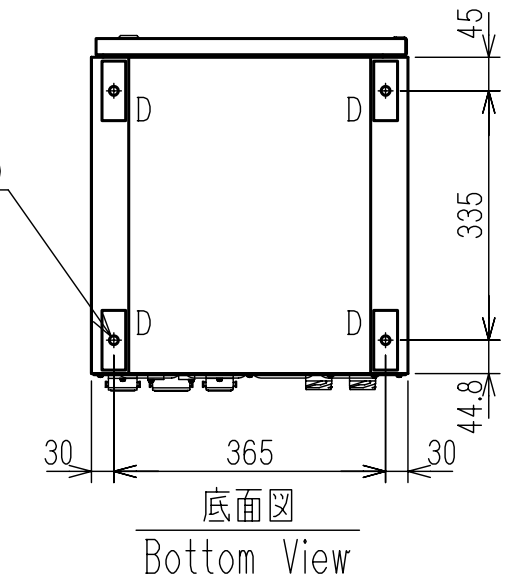
- 注記) 1. 制御盤の冷却及びメンテナンスの為、壁から500mm以上離して設置して下さい。
 2. 盤は、A穴(2ヶ所)及びB穴(2ヶ所)を使用し、盤固定金具を取付け、アンカボルトにて地面に固定して下さい。
 又は、D穴(4ヶ所)を使用し、ボルトにて装置等に固定して下さい。
 尚、盤固定金具は、お客様にてご準備下さい。
 3. コネクタは機種により異なります。コネクタ一覧表を御参照下さい。
 4. 外部軸コネクタ部は、外部軸仕様により異なります。
 本図で記載している図は代表例です。仕様によりコネクタ形状、器具符号が異なる場合があります。

- Notes) 1. The Controller should be installed away more than 500mm from the wall for cooling and maintenance.
 2. Use two holes marked with the symbol "A" and two holes marked with the symbol "B" to fix the controller on the floor with fixing jigs and anchor bolts.
 Use four holes marked with the symbol "D" to fix the controller to the device with bolts. The fixing jigs are prepared by a user.
 3. The Connector type is different depending on the controller model.
 4. The Connector part of the external axis is different depending on the external axis specification.
 The figures in this dimension diagram show typical examples.
 Therefore, shapes and marks may differ depending on the specification.

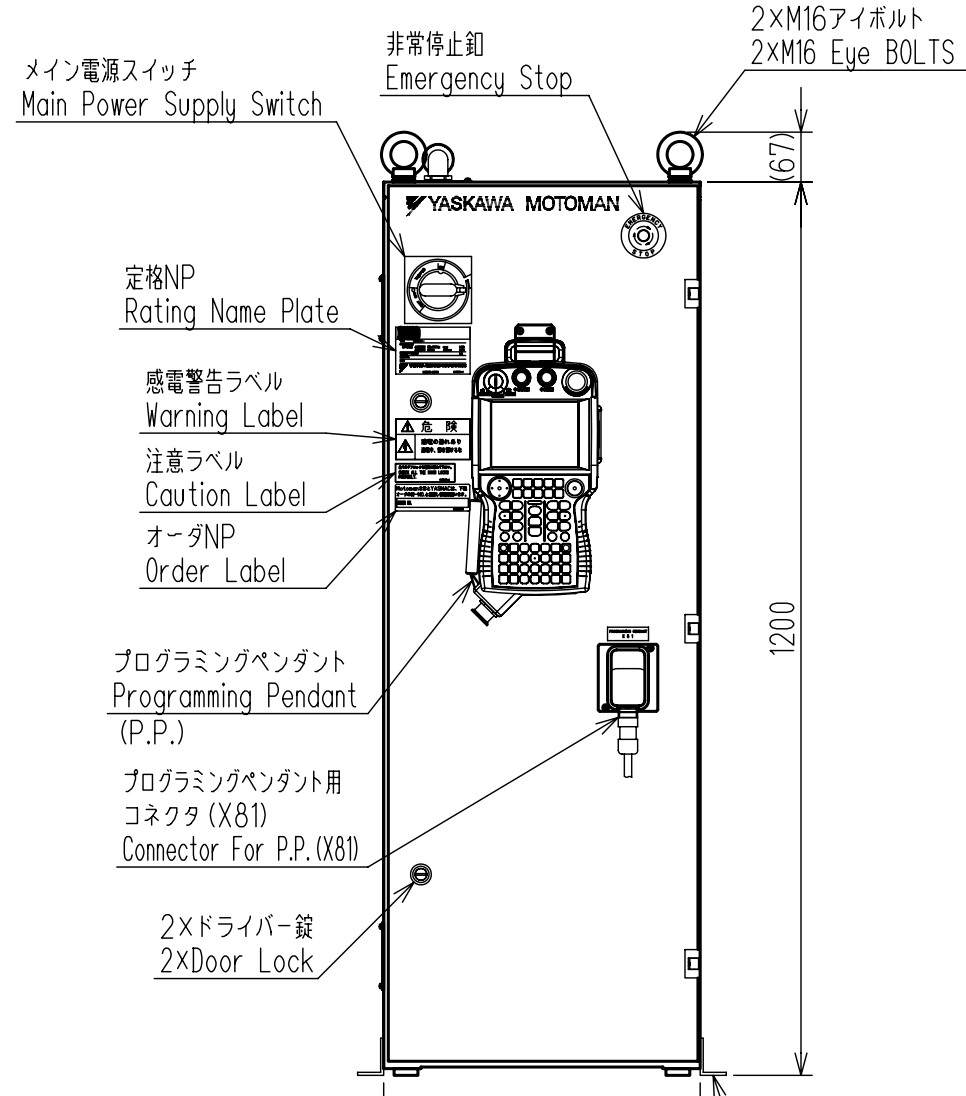


標準塗装色
 Box Color
 マンセル値 5Y7/1(半ツヤ)
 Munsell Notation 5Y7/1 Semi Gloss

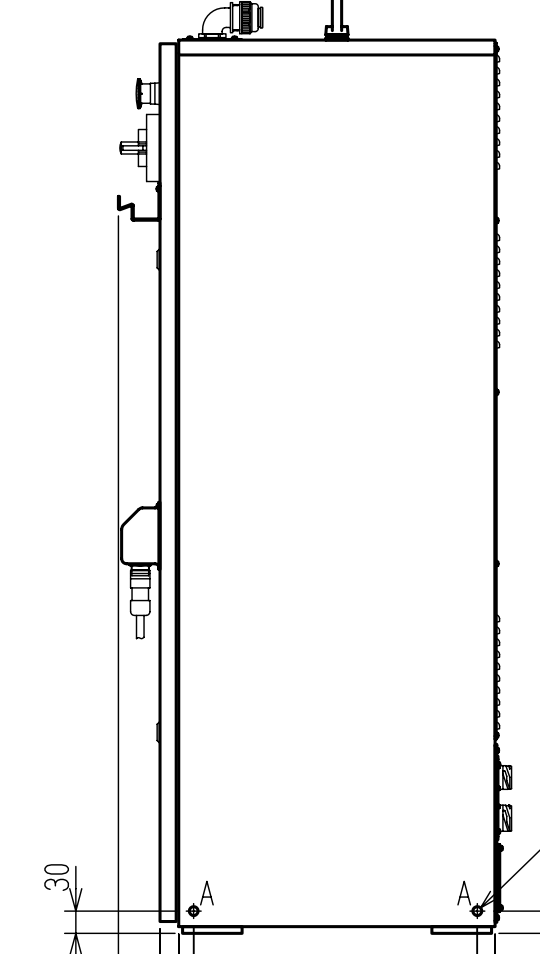
注2) See Notes (2)
 4×M10タップ(ネジ深さ25mm)
 4×M10 Tapped Holes (Screw Depth 25mm)
 D部(固定用穴)
 D Symbol (For fixing)



上面図
 Up Side View



正面図
 Front View

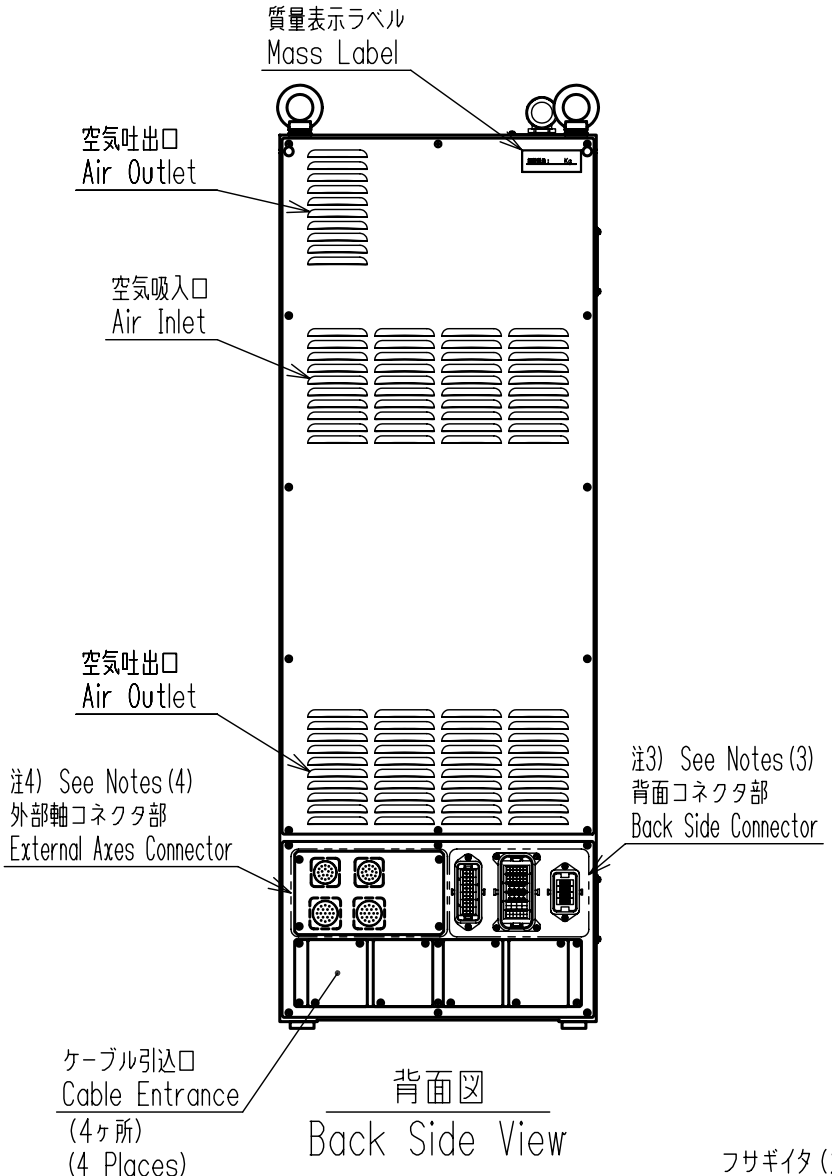


側面図
 Side View

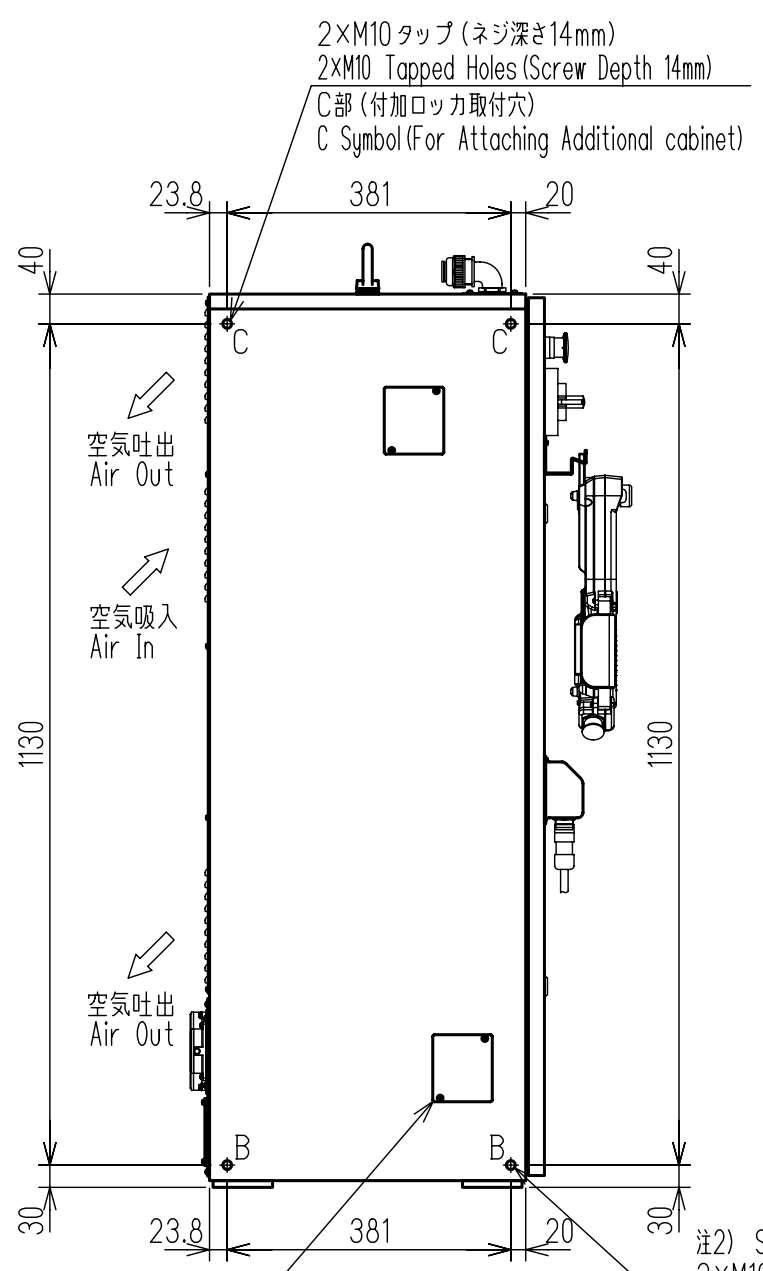
注2) See Notes (2)
 2×M10タップ(ネジ深さ14mm)
 2×M10 Tapped Holes (Screw Depth 14mm)
 A部(盤固定用金具取付穴)
 A Symbol (For Fixing)

概算質量 Approx. Mass	100kg
----------------------	-------

Dimensions in mm



背面図
 Back Side View



側面図
 Side View

注3) See Notes (3)
 背面コネクタ部
 Back Side Connector

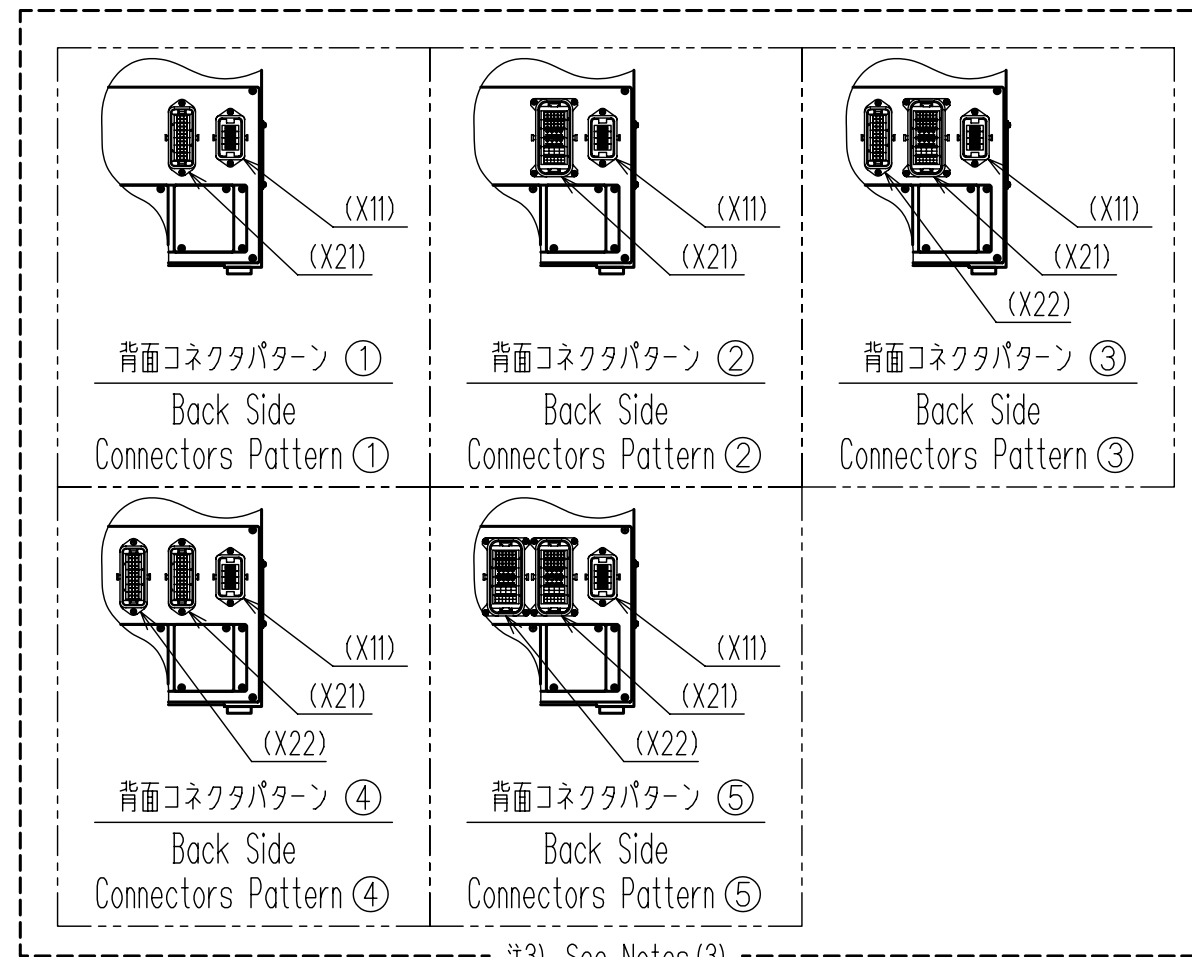
注2) See Notes (2)
 2×M10タップ(ネジ深さ14mm)
 2×M10 Tapped Holes (Screw Depth 14mm)
 B部(盤固定用金具取付穴又は付加ロック取付穴)
 B Symbol (For Fixing or Attaching Additional cabinet)

FOR STUDY PURPOSE ONLY

Note:
 1. All rights reserved.
 2. Please note that the data is subject to be deleted without advance notice.
 3. No warranty is given in relation to the data including the specification.
 4. We are not responsible for any damages or loss caused by the use of the data.

盤形式表
CONTROLLER TYPE LIST

ロボット機種 Robot Type	盤形式 Controller Type	背面コネクタ パターン Back Side Connectors Pattern	コネクタ (X21) タイプ Connector (X21) TYPE	コネクタ (X22) タイプ Connector (X22) TYPE
MA1800	ERDR-MA01800-A00	④	#1	#3
DX1350D	ERDR-DX1350D-A00	②	#2	
SIA30D	ERDR-SIA030D-A00	②	#2	
VS50	ERDR-VS00050-A00	③	#2	#1
MH50	ERDR-MH00050-A00	②	#2	
UP50SD	ERDR-UP050SD-A00	④	#1	#3
SIA50D	ERDR-SIA050D-A00	③	#2	#1
MS80	ERDR-MS00080-A00	②	#2	
MH80	ERDR-MH00080-A00	②	#2	
MPL80	ERDR-MPL0080-A00	②	#2	
MS120	ERDR-MS00120-A00	③	#2	#1
UP120ED	ERDR-UP120ED-A00	③	#2	#1
ES165D	ERDR-ES0165D-A00	③	#2	#1
ES165RD	ERDR-ES165RD-A00	③	#2	#1
HP165D	ERDR-HP0165D-A00	③	#2	#1
ES200D	ERDR-ES0200D-A00	③	#2	#1
ES200RD	ERDR-ES200RD-A00	③	#2	#1
UP350D	ERDR-UP0350D-A00	③	#2	#1
MC2000	ERDR-MC02000-A00	③	#2	#1

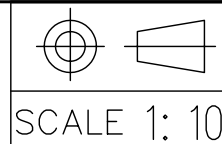


コネクタ一覧表
CONNECTOR LIST

器具符号 Device Symbol	形式 Connector Type	備考 Remark
X11	500809-0000 [A] (molex)	マニピュレータ信号用 For Manipulator Signals
X21	#1 58691-0010 [A] (molex)	マニピュレータパワー用 For Manipulator Power
	#2 58719-0010 [A] (molex)	
	#3 58691-0020 [B] (molex)	
X22	#1 58691-0010 [A] (molex)	
	#2 58719-0010 [A] (molex)	
	#3 58691-0020 [B] (molex)	
X81	CM09-R25S (DDK)	プログラミングペンダント用 Connector For P.P.

FOR STUDY PURPOSE ONLY

Note:
1. All rights reserved.
2. Please note that the data is subject to be deleted without advance notice.
3. No warranty is given in relation to the data including the specification.
4. We are not responsible for any damages or loss caused by the use of the data.



Reference Drawing

TITLE DX100 Controller (TYPE-A)
Dimension Diagram

DWG.NO. HB0280879-2
REV. 7